

See the full product line here.

**Want to learn more?**

# WALL TWISTER™

## Why the Wall Twister?



*Patent pending*

The reverse serrations under the head help prevent excessive seating torque from transferring into the screw and the base material, which prevents the screw from breaking or stripping if over tightened.

## Head Types Offered



**Pan Head**  
*Phillips*



**Pan Head**  
*Square*



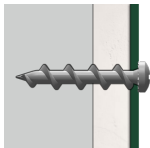
**Hex Head**  
*Phillips / Square*



**Wafer Head**  
*Phillips*

---

## No Pre-drilling Required



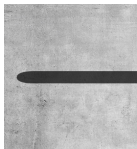
Drywall



Wood

Simply insert the anchor through the fixture and screw into base material until secure.

## Pre-drilling Necessary



Concrete



Grout-filled masonry



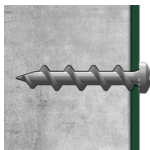
Hollow concrete masonry



Brick masonry



Plaster



1. Pre-drill a 3/16" hole using the carbide tipped drill bit provided.
2. Insert the anchor through the fixture and screw into base material until secure.