

Product Image



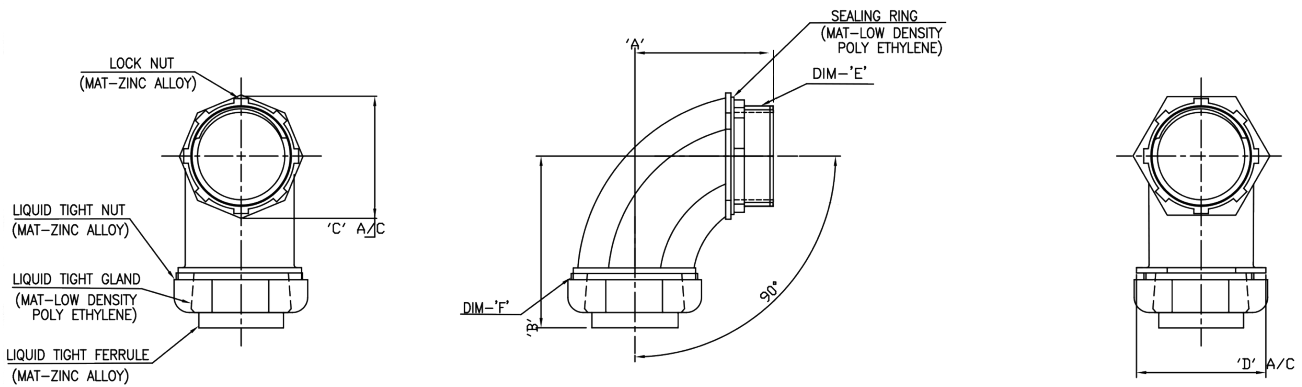
Die Cast Liquid Tite Connectors – 90°

90° die cast liquid tight connectors accommodate bends or turns in conduit runs and are used to connect metallic and non-metallic liquid tight conduit to a box or enclosure.

Features:

- UL listed and CSA certified
- Zinc die cast
- Available insulated & non-insulated

Dimensional Data



PN#	Size	"A" without Insulator	"B"	"C" A/C	"D" A/C	"E" NPT Thread	"F" UNF/UNS Thread
LT9038	3/8"	38.10	46.54	32.79	–	1/2"	1-3/16" UNF
LT9050	1/2"	38.10	46.54	32.79	–	1/2"	1-3/16" UNF
LT9075	3/4"	40.55	50.28	36.76	–	3/4"	1-7/16" UNF
LT90100	1"	60.23	72.92	46.36	–	1"	1-11/16" UNF
LT90125	1-1/4"	58.60	74.69	57.06	–	1-1/4"	2-1/8" UNF
LT90150	1-1/2"	63.50	75.87	65.36	–	1-1/2"	2-3/8" UNF
LT90200	2"	71.00	83.13	79.45	–	2"	2-7/8" UNF

The liquid tight connectors were wet location tested and oil spray tested per UL514b per clause 8.7 and 8.17.6 . Both tests simulates rain and falling liquids. Therefore, the liquid tight connectors are liquid tight, but are not submersible.