

Product Image



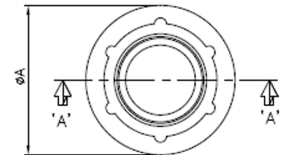
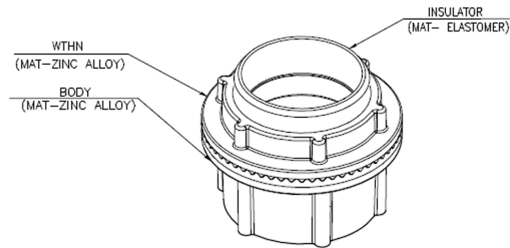
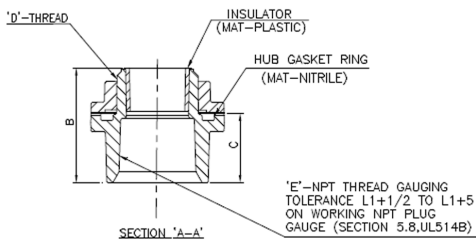
Weathertight Hubs

Weathertight hubs are used to connect rigid conduit or IMC to a metal enclosure. They are manufactured with a non-corrosive zinc alloy hub that is suitable for indoor or outdoor use. They are rated water tight and seal tightly to protect the conduit from moisture, oil and dust.

Features:

- UL listed
- Die cast from high strength zinc alloy
- Sealing ring
- 105° rated throat insulator

Performance Data



PN#	'ØA' (mm)	'B' (mm)	'C' (mm)	'D' NPSM Thread	'E' NTP Tapping	Reference Min. Thread Length
WTH50	36.50	38.10	21.00	1/2"	1/2"-14 TPI	12.67
WTH75	43.00	38.53	22.40	3/4"	3/4"-14 TPI	13.16
WTH100	50.70	45.96	25.30	1"	1"-11.5 TPI	15.67
WTH125	60.23	48.46	28.50	1-1/4"	1-1/4"-11.5 TPI	16.18
WTH150	69.78	47.80	28.50	1-1/2"	1-1/2"-11.5 TPI	16.18
WTH200	82.55	48.13	28.30	2"	2"-11.5 TPI	16.59
WTH250	96.00	66.11	39.70	2-1/2"	2-1/2"-8 TPI	25.27
WTH300	111.25	65.40	39.70	3"	3"-8 TPI	27.41
WTH350	126.10	65.30	39.70	3-1/2"	3-1/2"-8 TPI	28.80
WTH400	138.80	65.35	41.40	4"	4"-8 TPI	29.39